

# Royal Wootton Bassett Academy

## Transition Workbook

Moving from Primary to Secondary School is an exciting, but sometimes scary time! A new building, new rules, new teachers, new routines and new friends are just some of the changes you will experience but this booklet will help you get used to some of the routines and features of your new school!



# All About Me

Draw a self portrait here.

Name:

Birthday:

My Primary School:

Eye Colour:

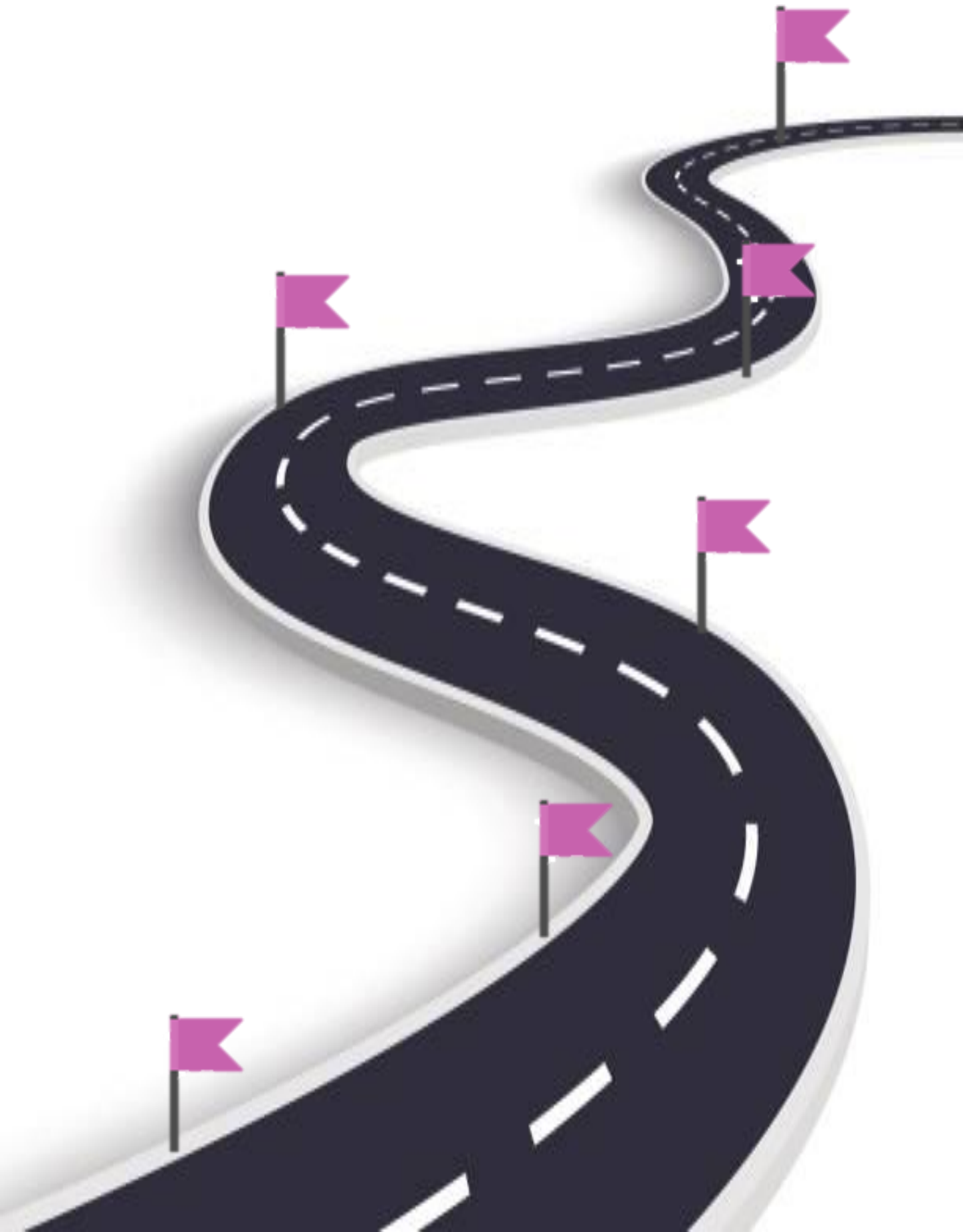
Hair Colour:

Height:

<b>Favourite Colour</b>	
<b>Favourite Animal</b>	
<b>If I could have a superpower, I'd....</b>	
<b>Favourite School Subject</b>	
<b>Best place I've ever been to...</b>	
<b>Dream country to visit...</b>	
<b>If I could travel back in time, I'd go to...</b>	
<b>My dream job is...</b>	

# My Journey so Far

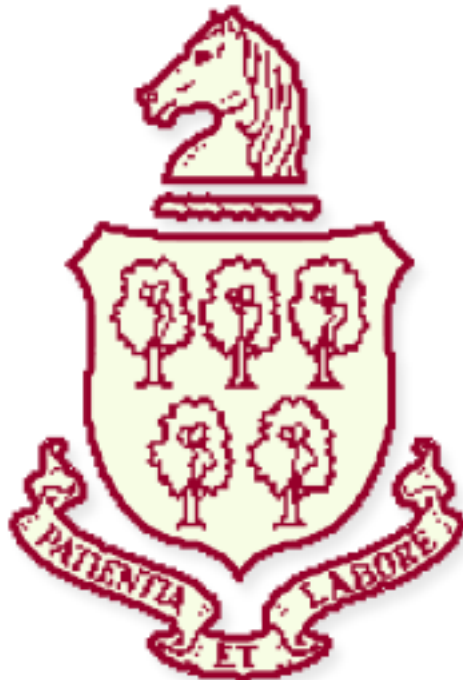
Life is a journey! Think back through primary school and write down your favourite memories or events that have shaped you to become the amazing person you are!



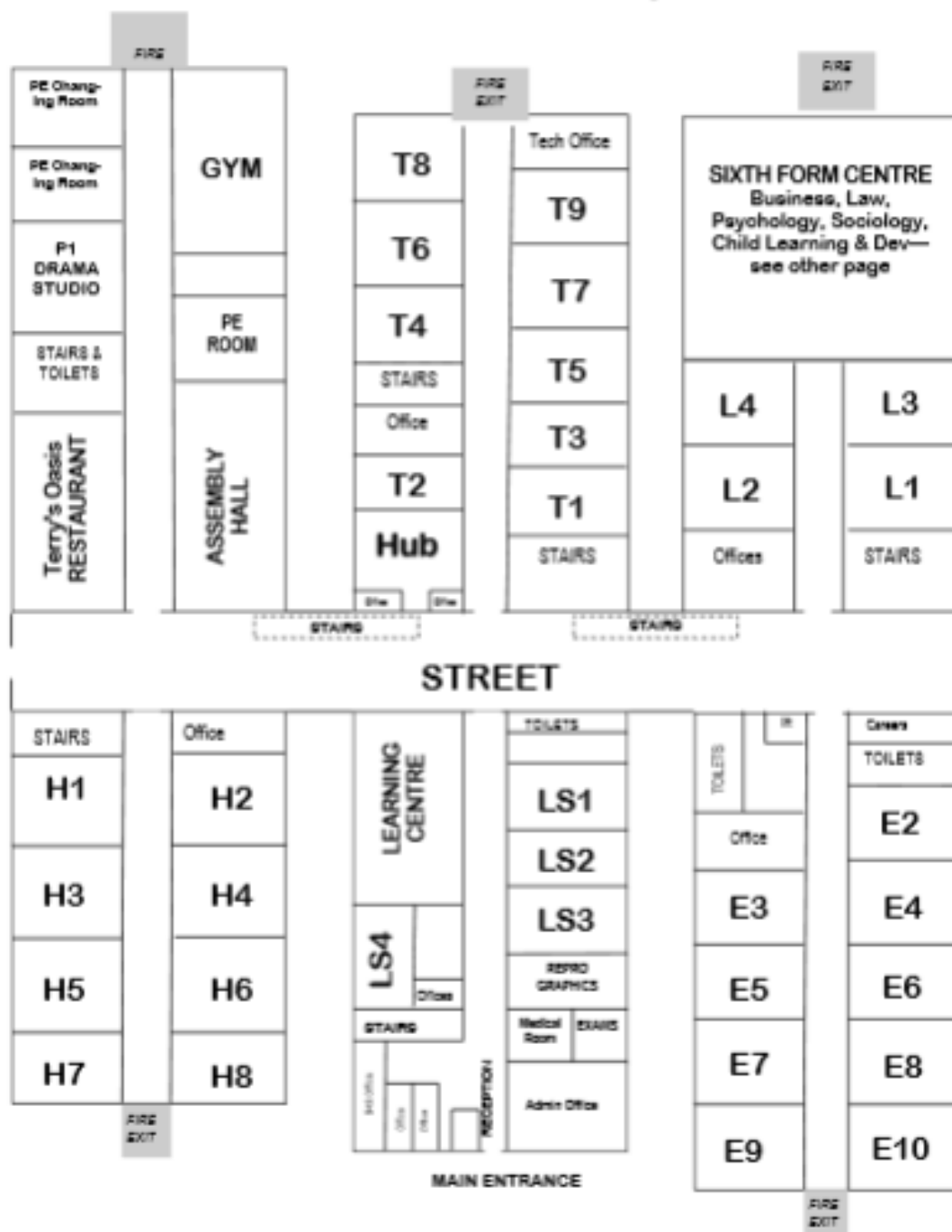
# My New Secondary School

Full Name of the School	
School Address	
School Telephone Number	
Name of the Head Teacher	
School Starts at	
School Finishes at	
I will get to school by	
How long will it take you to get to school?	
What time will you have to leave home?	

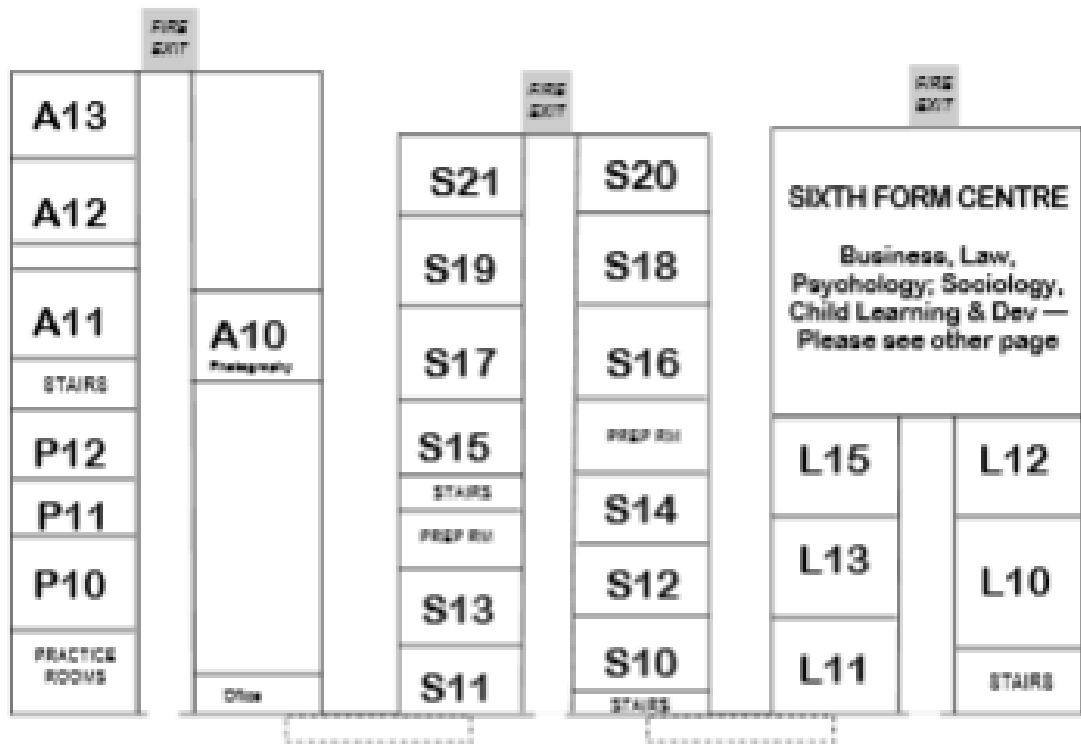
Add 10 words around the image below to describe your new school .



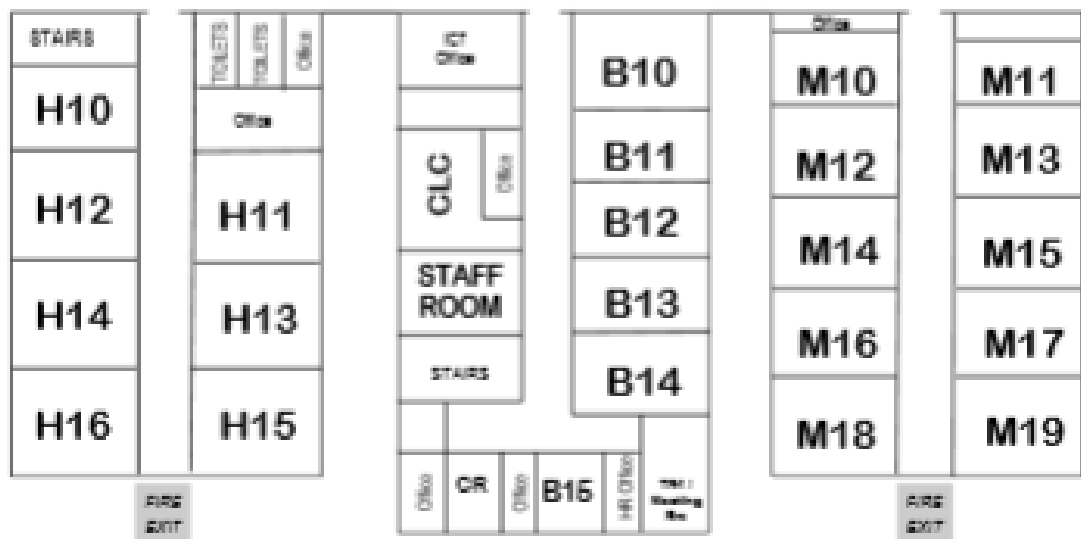
# Royal Wootton Bassett Academy Ground Floor Map



# Royal Wootton Bassett Academy 1st Floor Map



## STREET



# Moving to Your New School

- List 3 things you are most excited about moving to Royal Wootton Bassett Academy
  - 1.
  - 2.
  - 3.
- List 3 things you are a little worried/nervous about Royal Wootton Bassett Academy
  - 1.
  - 2.
  - 3.
- List 3 things you would like to know about Royal Wootton Bassett Academy
  - 1.
  - 2.
  - 3.
- List 3 things that will help you when moving to Royal Wootton Bassett Academy
  - 1.
  - 2.
  - 3.
- List 3 differences between your primary school and Royal Wootton Bassett Academy
  - 1.
  - 2.
  - 3.

# Subjects at your New School

Find the subjects below in the Word search – they are vertical, horizontal and diagonal!

E	A	A	E	E	M	I	T	R	O	T	U	T	S
D	E	S	I	G	N	T	E	C	H	S	G	N	G
E	C	G	E	O	G	R	A	P	H	Y	C	A	U
H	E	E	L	A	N	G	U	A	G	E	S	L	H
I	T	R	A	M	E	E	M	A	A	E	P	D	H
C	U	L	R	S	L	A	U	S	D	R	A	M	A
T	S	S	M	A	E	O	S	S	E	H	E	P	T
E	C	I	A	A	R	T	I	E	Y	T	E	N	E
M	I	M	T	C	S	Y	C	M	R	C	N	C	T
I	E	I	H	T	O	N	I	B	O	U	G	C	O
S	N	A	S	L	L	U	T	L	T	E	L	T	G
N	C	E	E	I	P	H	G	Y	S	I	I	E	C
L	E	G	I	N	I	S	E	E	I	T	S	G	P
C	D	R	S	E	O	A	L	R	H	S	H	C	G

Maths  
English  
Science  
Geography  
History  
Art  
Music  
P.E  
Drama

Design Tech  
ICT  
E.P (Ethics and Philosophy)  
Languages  
Assembly  
Tutor Time

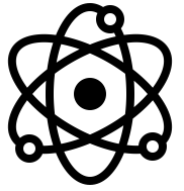


# Subjects at your New School

Match up the subject to the correct icon



Maths



English



Science

Geography



History

Art



Music



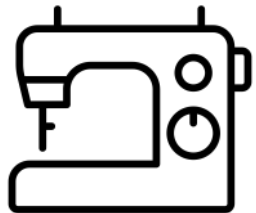
PE



Drama



Design Technology



ICT



Ethics and Philosophy



Languages



Tutor Time



# Timetable

Time	Activity
8:40-9:10	I-Learn – Period 1
9:10-10:10	Period 2
10:10-11:10	Period 3
11:10-11:30	Break
11:30-12:30	Period 4
12:30-2:00	Period 5 and a 30-minute lunch break
2:00-3:00	Period 6
3:00-4:15	After School clubs/ detentions

## Lunch explained:

At RWBA we have staggered lunches which means you will not be on lunch with everyone in the school to make the school less crowded. You will all get a 30-minute lunch during lesson 5. The possibilities are:

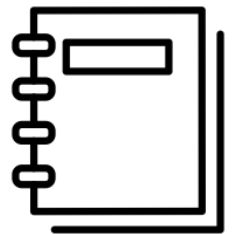
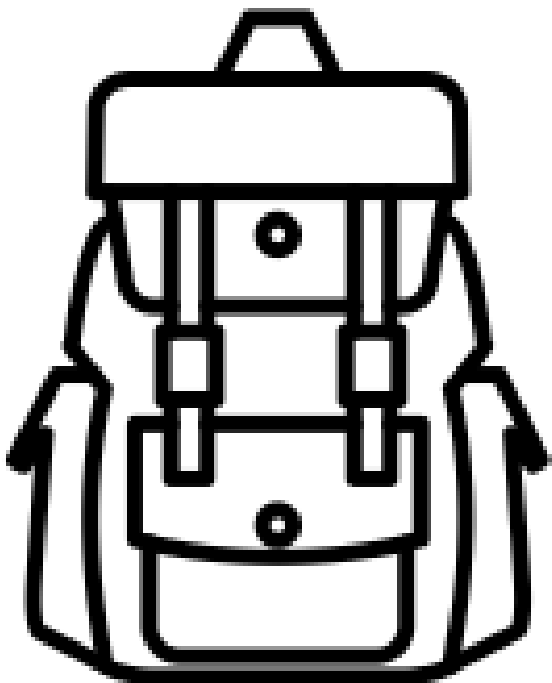
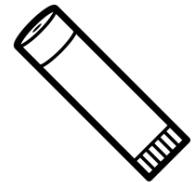
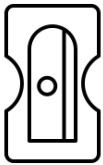
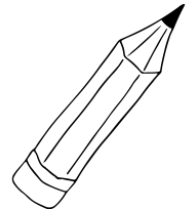
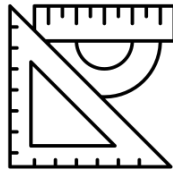
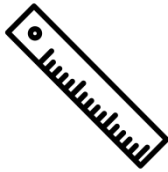
**Early lunch** – Lunch 12:30 – 1:00 and lesson 5 1:00-2:00

**Middle lunch** – Lesson 5 12:30-1:00, lunch 1:00-1:30 and the rest of lesson 5 1:30-2:00

**Late lunch** – lesson 5 12:30-1:30, lunch 1:30-2:00

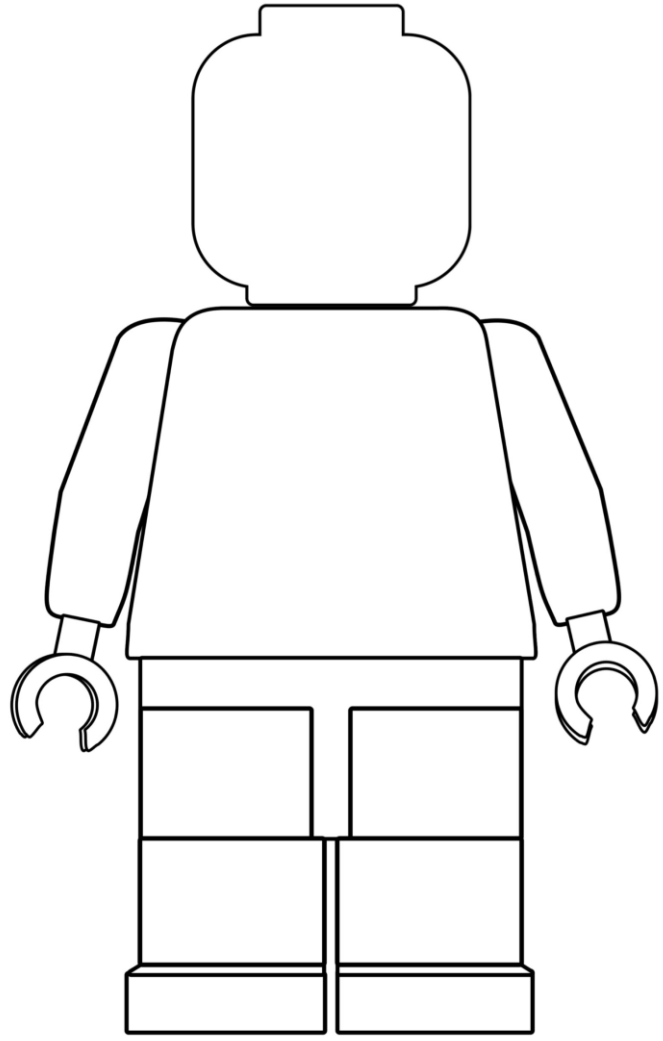
# Equipment

At secondary school, you will be moving around to different classrooms for different lessons. You could be in 6 classrooms in one day. This means that you need to bring all the equipment you will require with you for the day. You can keep larger items such as your PE kit in your locker, however you can only go to your locker before school, at break and lunchtime and at the end of the day. Below are some items you will need to bring – can you identify them and add anything else?



# Looking Smart at Secondary School

One of the different things about moving to secondary school is the change in what you will wear. At Royal Wootton Bassett Academy, we pride ourselves in looking smart and professional at all times. Use the school website or the information booklet to draw and label the school uniform you will wear onto the Lego figure



Why is wearing the correct school uniform important?

.....

.....

.....

.....

.....

# Getting to Secondary School

Getting to Royal Wootton Bassett Academy safely is just as important as being there. In the box below, draw the route you are going to take to school (whether that's walking, cycling, driving or by bus). Identify spots where there could be hazards (e.g. busy roads) and explain how you will manage this safely!



# Expectations

At RWBA we have Expectations about the way we choose to conduct ourselves, the way that we behave towards other people, and the way that we behave in our lessons. They are expectations, because we are expected to behave in this way; it is not a choice. The expectation that we have is that we all behave in a way that means that we are calm, collected and respectful towards one another, and that we arrive for our lessons punctual and prepared.

**Colour in all the boxes below which you think will be important to do when you come to secondary school.**

Turning up on time to lessons

Working successfully as part of a team

Being respectful of other peoples beliefs

Having your shirt tucked in neatly

Contributing to lessons

High level of respect shown to all

Saying good morning to people as you pass

Supporting others

Holding the door open for a teacher

Having correct equipment in lesson

Consistent punctuality over the whole year

Going above and beyond with your work

Turning up on time to lessons

Being respectful to other staff and students

Sitting with someone who is alone at lunch

Apologising if you have done something hurtful

Turning up on time to lessons

Discussing issues with a teacher rather

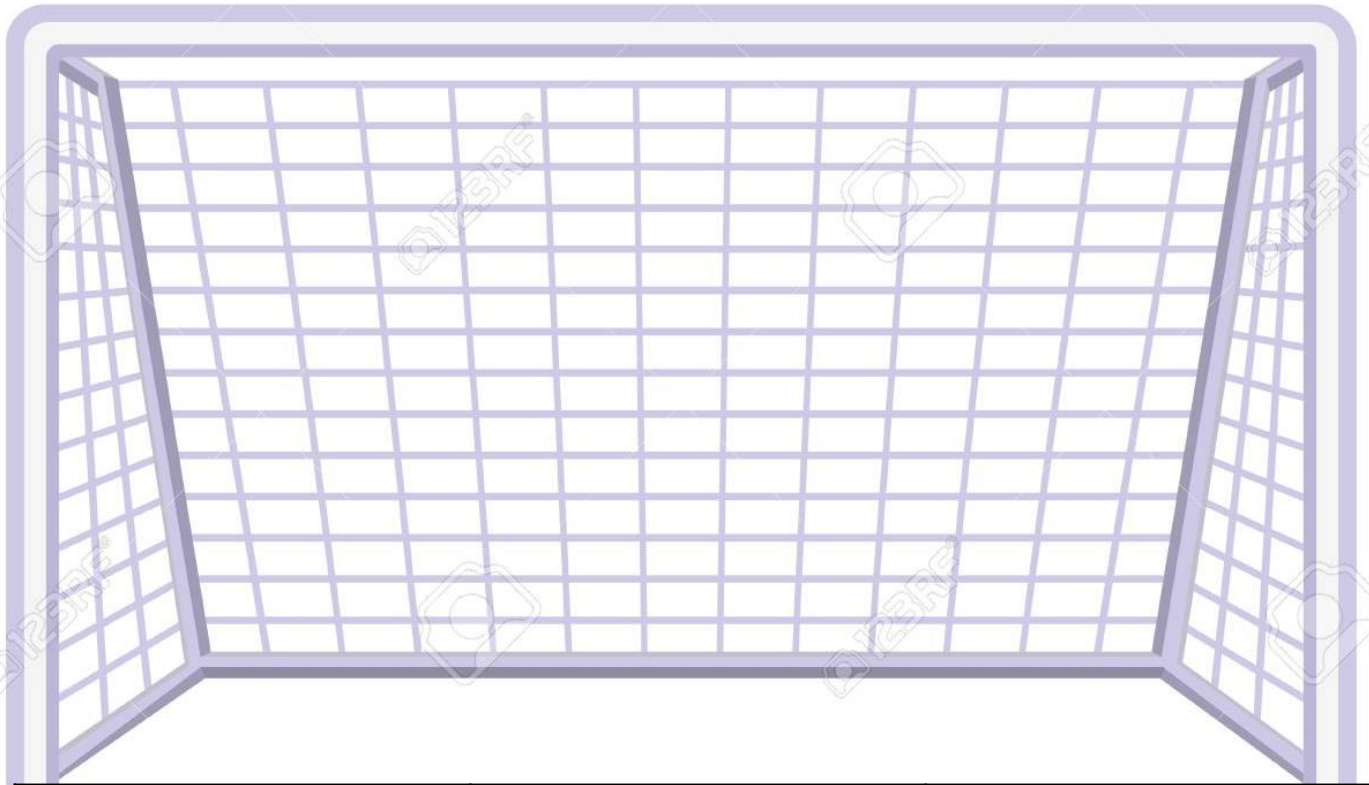
Remembering your homework

Giving someone a compliment

Asking for help when needed

# My Goals for Secondary School

When you go to Secondary School, you will learn a huge number of new skills, and improve skills you have practiced in Primary School. In the goal below, use the list to write in 10 new skills or things you'd like to build on in your years at Secondary School.



Be in a school play or production	Speak another language	Represent your school in a national competition
Learn to play a musical instrument	Volunteer in the local community	Travel to another country
Play for a school team	Learn how to survive in the wild	Take care of the school garden
Learn how to manage money	Taste food from another country	Walk the school dog
Cook a new meal from scratch	Read new books	Take part in a fancy dress day
Create a piece of art	Raise money for charity	Become Head Boy or Girl
Learn how to read a map	Join an after school club	Learn to dance
Use computers to create your own website	Learn First Aid	Improve your singing
Make new friends from other schools	Work as part of a team	Try camping

# Beyond Secondary School

After secondary school, you can move onto college or an apprenticeship and then to University or into a job! It's normal not to know what you want to do yet but this is a chance for you to have a think about your dream jobs!

**Job:**

**Key Skills:**

**Subjects to Study:**

Icons to represent that job:

**Job:**

**Key Skills:**

**Subjects to Study:**

Icons to represent that job:

**Job:**

**Key Skills:**

**Subjects to Study:**

Icons to represent that job: